

## Toomey & Accessories



**Product Name:** Toomey to Luer Lock Syringe

**Product Description:** Toomey 60cc Monoject to Luer Lock Syringe Stainless Steel

**Part #:** A047



**Product Name:** Toomey to Luer Lock Syringe

**Product Description:** Toomey 60cc Monoject to Luer Lock Syringe SS/ AL

**Part #:** A046



**Product Name:** Toomey to Luer Lock Needle

**Product Description:** 60cc Monoject to Luer Lock Needle

**Part #:** A049



**Product Name:** Toomey to Luer Lock Needle

**Product Description:** Toomey 60cc Monoject to Luer Lock Needle SS/ AL Hub.

**Part #:** A048



**Product Name:** Syringe Barb Adapter  
**Product Description:** Syringe Barb Adapter SS  
**Part #:** A057



**Product Name:** Luer Lock to Luer Lock  
**Product Description:** Luer Lock to Luer Lock Syringe soft tissue transfer system

- 3mm Part #: A044
- 4mm Part #: A045



**Product Name:** IV Spike Connector  
**Product Description:** IV Connector for Use w / Reusable Tubing  
**Part #:** A010



**Product Name:** Needle Connector  
**Product Description:** Needle Connector for Use w / Reusable Tubing  
**Part #:** A011



**Product Name:** Snapper Lock

**Product Description:** Snapper Lock SS Spring / Aluminum

- 60cc Monoject and B-D Syringe. **Part #:** A052
- 60cc Terumo Syringe. **Part #:** A990
- 30cc BD Syringe. **Part #:** A991
- 20cc BD Syringe. **Part #:** A051
- 35cc Monoject and 30cc BD Syringe. **Part #:** A050
- 10cc BD & 10cc Terumo. **Part #:** A053
- 10cc Monoject. **Part #:** A054



**Product Name:** Twist Lock

**Product Description:** Twist Lock - Aluminum

- 60cc Monoject and 60cc BD Syringe. **Part #:** A039
- 35cc Monoject Syringe. **Part #:** A038
- 20cc BD and 20cc Terumo Syringe. **Part #:** A042
- 30cc BD Syringe. **Part #:** A040
- 10cc BD Syringe. **Part #:** A041
- 10cc Monoject. **Part #:** A992

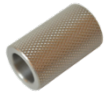


**Product Name:** Female Luer Lock Cap

**Product Description:** Female Luer Lock Cap SS  
**Part #:** A043



**Product Name:** Female Luer Lock Cap  
**Product Description:** Female Luer Lock Cap Plated Brass  
**Part #:** A002



**Product Name:** Toomey to Toomey  
**Product Description:** Toomey 60cc to Toomey 60cc Monoject Syringe, SS  
**Part #:** A999



**Product Name:** Toomey Syringe Cap  
**Product Description:** Toomey 60cc Syringe Cap, Non-Sterile, Autoclavable  
**Part #:** A001



**Product Name:** Catheter to Luer Lock Syringe  
**Product Description:** Female Luer Lock SS, Hub, AL w/ black anodizing  
**Part #:** A997



**Product Name:** Catheter to Luer Lock Needle  
**Product Description:** Catheter to Luer Lock Needle, Male Luer Lock SS, Hub: AL Black anodizing  
**Part #:** A995



**Product Name:** Awl

**Product Description:** Epidermis punches for piercing a circumferential incision hole prior to infiltration and tissue harvesting.

- 3mm Part #: A883
- 4mm Part #: A884
- 5mm Part #: A885